

Gasconade County SWCD

July 2025—Volume 1, No 7



Did you know? - July: Buck Moon

The Full Buck Moon occurs when the new antlers of buck deer push out from their foreheads in coatings of velvety fur. It was also often called the Full Thunder Moon, due to thunderstorms being now most frequent. Sometimes it is also called the Full Hay Moon.

Virtual Fence Foundations

Calling all livestock grazers looking to increase current grazing efforts without the stress of fencing! This 5 part webinar series dives into the opportunity of virtual fencing through educational topics and first hand experiences.

Session Lineup:

Last Friday of the month from 12 to 1 pm

JUNE 27 - THE BASICS

JULY 25 - CROPLAND

AUGUST 29 - PERENNIAL PASTURES

SEPTEMBER 26 - NUTRIENT MANAGEMENT

OCTOBER 24 - PRODUCERS AND PROVIDERS

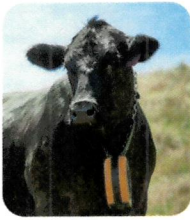


Image credit eShepherd



Image credit Nofence

Scan or click the QR code to register today!



For more information or accommodations contact:

Kaitlyn Dozler
Center for Regenerative Agriculture
kaitlyn.dozler@missouri.edu

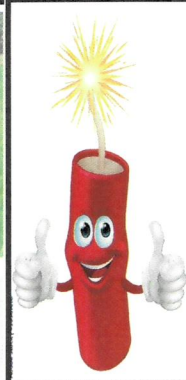
Shelby Jenkins
Ray County Extension: 816-776-6961
shelbyjenkins@missouri.edu



Center for Regenerative Agriculture
University of Missouri



Extension
University of Missouri



CALENDAR

NO BOARD MEETING!
July 4—Independence Day



**Cover Crop Sign-up Period
ends September 15 !
Don't miss out — call the
office now to get signed up!**



District Staff:

Patty Burt — District Specialist II, Manager
Sarah Berkemeyer—District Specialist V Technician

Board of Supervisors:

Luke Mangrum—Chairman
Brian Rost—Vice-Chairman
Joel Wehmeyer—Treasurer
Harvey Hesemann—Member
Kate McDonald—Secretary

NRCS Staff:

Mark Brandt—District Conservationist
Megan Brown—Resource Conservationist
April Aholt—Soil Conservation Technician

MDC Staff:

Ryan Westcott—Private Lands Conservationist
Scott Williams—Fisheries Biologist
Aaron Holsapple—Forester
Jason Eikermann—Conservation Agent

USDA Service Center

314 S Olive St
Owensville MO 65066
(573)437-3478

This newsletter is partially funded by the 1/10th of 1% Parks and Soil and Water Sales Tax.